



# MCM OIL TOOLS

Q U A L I T Y • D E L I V E R Y • P R I C E

*Check Valves  
for Drilling &  
Production*

*Pressures up to  
15,000 PSI for  
Various Sizes*

*Meets or  
Exceeds API 6A  
Standards &  
NACE  
MR-01-75*

*Internal parts  
are completely  
interchangeable  
with CIW*

*Design Features*

*Metal to Metal Seal*

*Stream Line Valve  
Seat*

*Low Maintenance*

## **Cameron® Style 'MS' Check Valve**



- Choke Manifolds
- Cameron Type 'FLS' & 'FC' Gate Valves
- Cameron Type H Back Pressure Valves
- Cameron Type U BOP Rubber Parts
- Cameron Type MS & R Check Valves
- Swaco & Cameron Hydraulic Chokes
- Control Panels Swaco & Cameron

10422 W. Gulf Bank Rd. • Houston, Texas 77040

Tel: 713-541-1212 • Fax: 713-541-4664

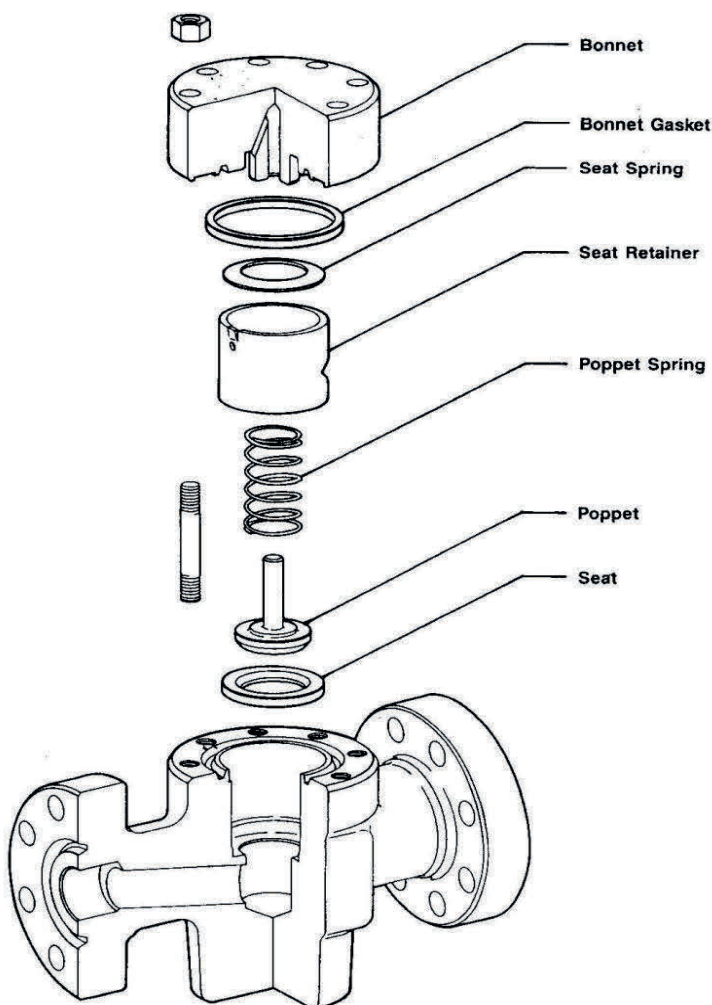
E-Mail: [sales@mcmoiltools.com](mailto:sales@mcmoiltools.com) • Website: [www.mcmoiltools.com](http://www.mcmoiltools.com)

Cameron® and SWACO® are registered trademarks of companies not affiliated with MCM in any way



# MCM OIL TOOLS

Q U A L I T Y • D E L I V E R Y • P R I C E



API 6A Material Classification	Body & Bonnet Material	Poppet	Seat	Retainer
AA-General Service	Low alloy steel	AISI 410 SS	AISI 410 SS	AISI 410 SS
BB-General Service	Low alloy steel	AISI 410 SS	AISI 410 SS	AISI 410 SS
CC-General Service	AISI 410 SS	AISI 410 SS	AISI 410 SS	AISI 410 SS
DD-Sour Service	Low alloy steel	AISI 410 SS	AISI 410 SS	AISI 410 SS
DD-NL Sour Service-Super Trim	Low alloy steel	NITRONIC 50*	NITRONIC 50*	AISI 410 SS
EE-Sour Service	Low alloy steel	AISI 410 SS	AISI 410 SS	AISI 410 SS
EE-NL Sour Service-Super Trim	Low alloy steel	NITRONIC 50*	NITRONIC 50*	AISI 410 SS

As defined by NACE Standards MR-01-75

Notes: Specifications are subject to change without notice. Special trims are available upon request.

**\*INCONEL 718 AVAILABLE UPON REQUEST**

10422 W. Gulf Bank Rd. • Houston, Texas 77040

Tel: 713-541-1212 • Fax: 713-541-4664

E-Mail: [sales@mcmoiltools.com](mailto:sales@mcmoiltools.com) • Website: [www.mcmoiltools.com](http://www.mcmoiltools.com)

*Cameron® and SWACO® are registered trademarks of companies not affiliated with MCM in any way*



# MCM OIL TOOLS

Q U A L I T Y • D E L I V E R Y • P R I C E

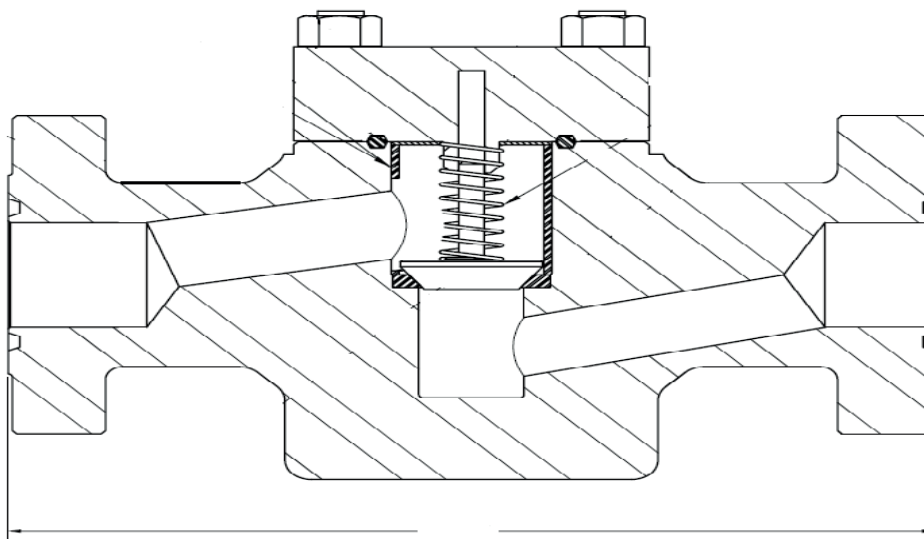
The MCM MS Check Valve metal to metal seal is design for high pressure/high temperature environments where elastomer seals cannot be used. Applications for the MCM MS Check Valve are high-pressure mud choke manifolds and high pressure Christmas tree injection and kill lines.

The MCM 'MS' Check Valve can be used with oil, gas, water or drilling fluids and are available in all temperature and material classes as well as product specification levels (PSL) as specified in API 6A.

It is available in standard pressure ratings from 3,000 psi to 20,000 psi and bore sizes from 1-13/16" through 4-1/16".

## Design Features and Benefits

- **Metal to Metal Seals** - Metal to Metal sealing is ideal for chemical and well fluids contact the sealing areas and extreme temperatures are a factor
- **Streamline Valve Seat** - A streamlined valve seat area results in low turbulence and improves body longevity.
- **Low Maintenance** -The MCM MS Check Valve has no lubricated parts and requires no routine maintenance.
- **MCM MS Check Valve** conforms to API 6A requirements for end to end measurements.



Nominal Size	Rating	Face to Face Dimension
2-1/16"	10,000	20.50
3-1/16"	10,000	24.375
4-1/16"	10,000	26.375

Nominal Size	Rating	Face to Face Dimension
2-1/16"	15,000	19.00
3-1/16"	15,000	23.56
4-1/16"	15,000	29.00

10422 W. Gulf Bank Rd. • Houston, Texas 77040

Tel: 713-541-1212 • Fax: 713-541-4664

E-Mail: [sales@mcmoiltools.com](mailto:sales@mcmoiltools.com) • Website: [www.mcmoiltools.com](http://www.mcmoiltools.com)

Rev 0 4/3/19

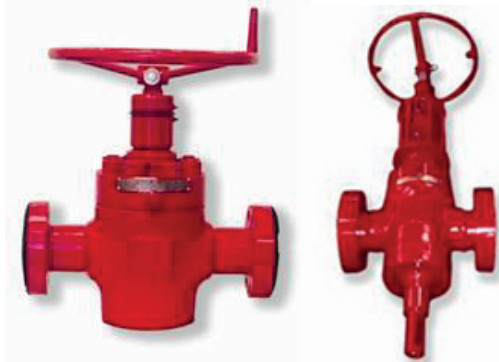
*Cameron® and SWACO® are registered trademarks of companies not affiliated with MCM in any way*





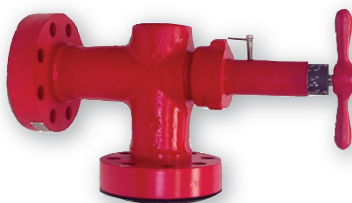
# MCM OIL TOOLS

QUALITY • DELIVERY • PRICE



GATE VALVES

**CAMERON® STYLE 'FC' & 'FLS' TYPE**



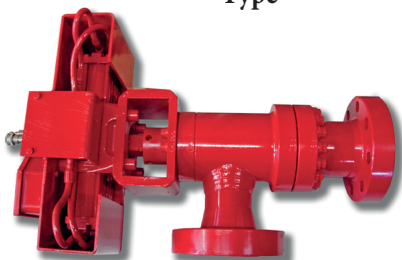
**MANUAL CHOKE**  
**CAMERON® STYLE 'H2' TYPE**



**CAMERON® Type U Packers**  
**&**  
**Top Seals**



**Back Pressure Valve**  
**Cameron® Style "H & HM"**  
**Type**



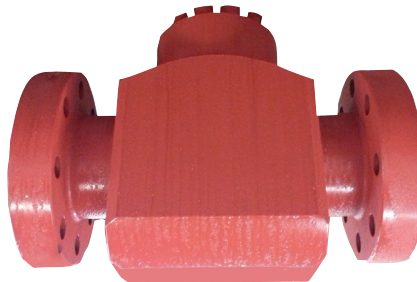
**SWACO® CHOKE**



**HYDRAULIC DRILLING CHOKE**  
**CAMERON® STYLE**



**CONTROL PANEL**



**'MS' STYLE CHECK VALVE**  
**CAMERON® STYLE**



**CHECK VALVE**  
**CAMERON® STYLE 'R' TYPE**



10422 W. Gulf Bank Rd. • Houston, Texas 77040

Tel: 713-541-1212 • Fax: 713-541-4664

E-Mail: [sales@mcmoiltools.com](mailto:sales@mcmoiltools.com) • Website: [www.mcmoiltools.com](http://www.mcmoiltools.com)

*Cameron® and SWACO® are registered trademarks of companies not affiliated with MCM in any way*